

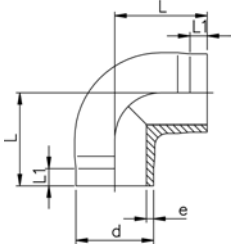
# Fittings for Butt Fusion

## PROGEF Natural, Elbow 90°, S5/SDR11



### Model:

- Material: PP-R unpigmented
- Bead and Crevice Free weldable with the new BCF® Plus fusion machine
- Infrared-(IR Plus®) compatible. Please choose fusion parameters: PP-n (PP-R)
- Conventional butt-welding according to DVS 2207 part 11



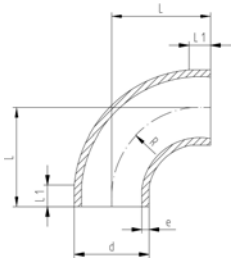
| d<br>[mm] | FM      | Code               | kg    | L<br>[mm] | L1<br>[mm] | e<br>[mm] |  |
|-----------|---------|--------------------|-------|-----------|------------|-----------|--|
| 20        | BCF, IR | <b>728 108 506</b> | 0.008 | 38        | 25         | 1,9       |  |
| 25        | BCF, IR | <b>728 108 507</b> | 0.013 | 42        | 26         | 2,3       |  |
| 32        | BCF, IR | <b>728 108 508</b> | 0.022 | 46        | 27         | 2,9       |  |
| 40        | BCF, IR | <b>728 108 509</b> | 0.044 | 51        | 22         | 3,7       |  |
| 50        | BCF, IR | <b>728 108 510</b> | 0.077 | 58        | 23         | 4,6       |  |
| 63        | BCF, IR | <b>728 108 511</b> | 0.138 | 66        | 21         | 5,8       |  |

## PROGEF Natural, Bend 90°, S8,3/SDR17,6



### Model:

- Material: PP-R unpigmented
- Bead and Crevice Free weldable with the new BCF® Plus fusion machine
- Infrared-(IR Plus®) compatible. Please choose fusion parameters: PP-n (PP-R)
- Conventional butt-welding according to DVS 2207 part 11



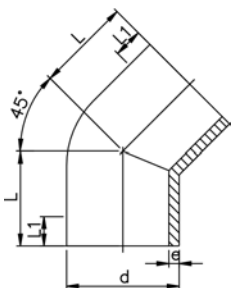
| d<br>[mm] | FM      | Code               | kg    | L<br>[mm] | L1<br>[mm] | e<br>[mm] | R<br>[mm] |  |
|-----------|---------|--------------------|-------|-----------|------------|-----------|-----------|--|
| 75        | BCF, IR | <b>728 018 412</b> | 0.156 | 100       | 20         | 4,3       | 90        |  |
| 90        | BCF, IR | <b>728 018 413</b> | 0.221 | 100       | 20         | 5,1       | 90        |  |
| 110       | BCF, IR | <b>728 018 414</b> | 0.474 | 141       | 25         | 6,3       | 130       |  |

## PROGEF Natural, Elbow 45°, S5/SDR11



### Model:

- Material: PP-R unpigmented
- Bead and Crevice Free weldable with the new BCF® Plus fusion machine
- Infrared-(IR Plus®) compatible. Please choose fusion parameters: PP-n (PP-R)
- Conventional butt-welding according to DVS 2207 part 11



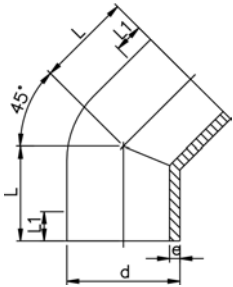
| d<br>[mm] | FM      | Code               | kg    | L<br>[mm] | L1<br>[mm] | e<br>[mm] |  |
|-----------|---------|--------------------|-------|-----------|------------|-----------|--|
| 20        | BCF, IR | <b>728 158 506</b> | 0.008 | 32        | 24         | 1,9       |  |
| 25        | BCF, IR | <b>728 158 507</b> | 0.012 | 34        | 25         | 2,3       |  |
| 32        | BCF, IR | <b>728 158 508</b> | 0.022 | 36        | 25         | 2,9       |  |
| 40        | BCF, IR | <b>728 158 509</b> | 0.037 | 39        | 25         | 3,7       |  |
| 50        | BCF, IR | <b>728 158 510</b> | 0.054 | 42        | 26         | 4,6       |  |
| 63        | BCF, IR | <b>728 158 511</b> | 0.097 | 47        | 29         | 5,8       |  |



## PROGEF Natural, Elbow 45°, S8,3/SDR17,6

### Model:

- Material: PP-R unpigmented
- Conventional butt-welding according to DVS 2207 part 11
- Bead and Crevice Free weldable with the new BCF® Plus fusion machine
- Infrared-(IR Plus®) compatible. Please choose fusion parameters: PP-n (PP-R)



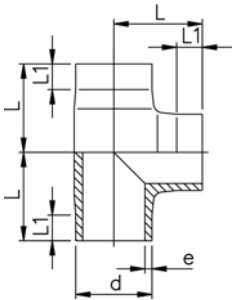
| d<br>[mm] | FM      | Code               | kg    | L<br>[mm] | L1<br>[mm] | e<br>[mm] |
|-----------|---------|--------------------|-------|-----------|------------|-----------|
| 75        | BCF, IR | <b>728 158 412</b> | 0.099 | 49        | 33         | 4,3       |
| 90        | BCF, IR | <b>728 158 413</b> | 0.164 | 57        | 48         | 5,7       |
| 110       | BCF, IR | <b>728 158 414</b> | 0.296 | 70        | 38         | 6,9       |



## PROGEF Natural, Tee 90° equal, S5/SDR11

### Model:

- Material: PP-R unpigmented
- Bead and Crevice Free weldable with the new BCF® Plus fusion machine
- Infrared-(IR Plus®) compatible. Please choose fusion parameters: PP-n (PP-R)
- Conventional butt-welding according to DVS 2207 part 11



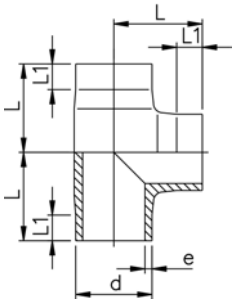
| d<br>[mm] | FM      | Code               | kg    | L<br>[mm] | L1<br>[mm] | e<br>[mm] |
|-----------|---------|--------------------|-------|-----------|------------|-----------|
| 20        | BCF, IR | <b>728 208 506</b> | 0.011 | 38        | 24         | 1,9       |
| 25        | BCF, IR | <b>728 208 507</b> | 0.019 | 42        | 26         | 2,3       |
| 32        | BCF, IR | <b>728 208 508</b> | 0.032 | 46        | 26         | 2,9       |
| 40        | BCF, IR | <b>728 208 509</b> | 0.059 | 51        | 23         | 3,7       |
| 50        | BCF, IR | <b>728 208 510</b> | 0.103 | 58        | 22         | 4,6       |
| 63        | BCF, IR | <b>728 208 511</b> | 0.184 | 66        | 20         | 5,8       |



## PROGEF Natural, Tee 90° equal, S8,3/SDR17,6

### Model:

- Material: PP-R unpigmented
- Bead and Crevice Free weldable with the new BCF® Plus fusion machine
- Infrared-(IR Plus®) compatible. Please choose fusion parameters: PP-n (PP-R)
- Conventional butt-welding according to DVS 2207 part 11



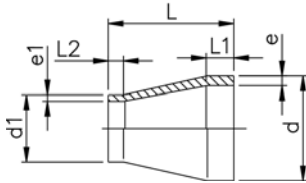
| d<br>[mm] | FM      | Code               | kg    | L<br>[mm] | L1<br>[mm] | e<br>[mm] |
|-----------|---------|--------------------|-------|-----------|------------|-----------|
| 75        | BCF, IR | <b>728 208 412</b> | 0.230 | 75        | 20         | 4,3       |
| 90        | BCF, IR | <b>728 208 413</b> | 0.401 | 90        | 20         | 5,7       |
| 110       | BCF, IR | <b>728 208 414</b> | 0.723 | 110       | 20         | 6,9       |



## PROGEF Natural, Reducer, S5/SDR11

### Model:

- Material: PP-R unpigmented
- Bead and Crevice Free weldable with the new BCF® Plus fusion machine
- Infrared-(IR Plus®) compatible. Please choose fusion parameters: PP-n (PP-R)
- Conventional butt-welding according to DVS 2207 part 11



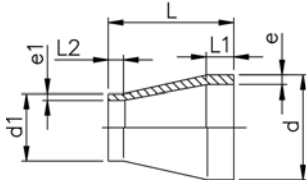
| d<br>[mm] | d1<br>[mm] | FM      | Code               | kg    | L<br>[mm] | L1<br>[mm] | L2<br>[mm] | e<br>[mm] | e1<br>[mm] |
|-----------|------------|---------|--------------------|-------|-----------|------------|------------|-----------|------------|
| 25        | 20         | BCF, IR | <b>728 908 537</b> | 0.007 | 50        | 20         | 20         | 2,3       | 1,9        |
| 32        | 20         | BCF, IR | <b>728 908 542</b> | 0.010 | 50        | 20         | 20         | 3,0       | 1,9        |
| 32        | 25         | BCF, IR | <b>728 908 541</b> | 0.011 | 50        | 20         | 20         | 3,0       | 2,3        |
| 40        | 20         | BCF, IR | <b>728 908 548</b> | 0.015 | 58        | 20         | 23         | 3,7       | 1,9        |
| 40        | 25         | BCF, IR | <b>728 908 547</b> | 0.016 | 55        | 20         | 20         | 3,7       | 2,3        |
| 40        | 32         | BCF, IR | <b>728 908 546</b> | 0.019 | 55        | 20         | 20         | 3,7       | 2,9        |
| 50        | 25         | BCF, IR | <b>728 908 554</b> | 0.025 | 60        | 20         | 20         | 4,6       | 2,3        |
| 50        | 32         | BCF, IR | <b>728 908 553</b> | 0.027 | 60        | 20         | 20         | 4,6       | 2,9        |
| 50        | 40         | BCF, IR | <b>728 908 552</b> | 0.030 | 60        | 20         | 20         | 4,6       | 3,7        |
| 63        | 32         | BCF, IR | <b>728 908 560</b> | 0.043 | 65        | 20         | 20         | 5,8       | 2,9        |
| 63        | 40         | BCF, IR | <b>728 908 559</b> | 0.047 | 65        | 20         | 20         | 5,8       | 3,7        |
| 63        | 50         | BCF, IR | <b>728 908 558</b> | 0.052 | 65        | 20         | 20         | 5,8       | 4,6        |



## PROGEF Natural, Reducer, S8,3/SDR17,6

### Model:

- Material: PP-R unpigmented
- Bead and Crevice Free weldable with the new BCF® Plus fusion machine
- Infrared-(IR Plus®) compatible. Please choose fusion parameters: PP-n (PP-R)
- Conventional butt-welding according to DVS 2207 part 11

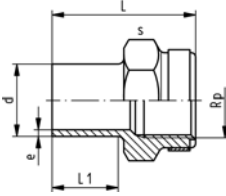


\* SDR17,6 - SDR11

| d<br>[mm] | d1<br>[mm] | FM      | Code               | kg    | L<br>[mm] | L1<br>[mm] | L2<br>[mm] | e<br>[mm] | e1<br>[mm] |
|-----------|------------|---------|--------------------|-------|-----------|------------|------------|-----------|------------|
| *75       | 40         | BCF, IR | <b>728 908 466</b> | 0.048 | 68        | 20         | 23         | 4,3       | 3,7        |
| *75       | 50         | BCF, IR | <b>728 908 465</b> | 0.051 | 65        | 20         | 20         | 4,3       | 4,6        |
| *75       | 63         | BCF, IR | <b>728 908 464</b> | 0.060 | 65        | 20         | 20         | 4,3       | 5,8        |
| *90       | 63         | BCF, IR | <b>728 908 471</b> | 0.086 | 75        | 22         | 19         | 5,7       | 5,8        |
| 90        | 75         | BCF, IR | <b>728 908 470</b> | 0.086 | 75        | 21         | 19         | 5,7       | 4,3        |
| 110       | 75         | BCF, IR | <b>728 908 477</b> | 0.135 | 90        | 26         | 20         | 6,9       | 4,3        |
| 110       | 90         | BCF, IR | <b>728 908 476</b> | 0.154 | 90        | 25         | 22         | 6,9       | 5,7        |

# Adaptor Fittings for Butt Fusion

## PROGEF Natural, Adaptor Socket, metric - Rp

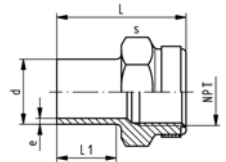


### Model:

- Material: PP-R unpigmented
- With butt fusion spigot **SDR11** and BSP parallel female thread Rp, reinforced
- Connection to plastic or metal
- Reinforcing ring stainless (A2)
- Do not use thread sealing pastes that are harmful to PP

| d<br>[mm] | FM      | Rp<br>[inch] | PN | Code               | kg    | L<br>[mm] | L1<br>[mm] | s<br>[mm] | e<br>[mm] |
|-----------|---------|--------------|----|--------------------|-------|-----------|------------|-----------|-----------|
| 20        | BCF, IR | ½            | 10 | <b>728 918 056</b> | 0.017 | 49        | 28         | 32        | 1,9       |
| 25        | BCF, IR | ¾            | 10 | <b>728 918 057</b> | 0.022 | 51        | 28         | 36        | 2,3       |
| 32        | BCF, IR | 1            | 10 | <b>728 918 058</b> | 0.039 | 54        | 28         | 46        | 2,9       |
| 40        | BCF, IR | 1 ¼          | 10 | <b>728 918 059</b> | 0.057 | 56        | 28         | 55        | 3,7       |
| 50        | BCF, IR | 1 ½          | 10 | <b>728 918 060</b> | 0.085 | 60        | 28         | 64        | 4,6       |
| 63        | BCF, IR | 2            | 10 | <b>728 918 061</b> | 0.140 | 62        | 28         | 80        | 5,8       |

## PROGEF Natural, Adaptor Sockets, metric - NPT

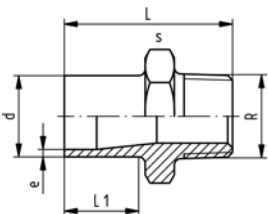


### Model:

- Material: PP-R unpigmented
- With butt fusion spigot **SDR11** and NPT tapered female thread, reinforced
- Connection to plastic or metal
- Reinforcing ring stainless (A2)
- Do not use thread sealing pastes that are harmful to PP

| d<br>[mm] | FM      | NPT<br>[inch] | PN | Code               | kg    | L<br>[mm] | L1<br>[mm] | s<br>[mm] | e<br>[mm] |
|-----------|---------|---------------|----|--------------------|-------|-----------|------------|-----------|-----------|
| 20        | BCF, IR | ½             | 10 | <b>728 914 056</b> | 0.017 | 49        | 28         | 32        | 1,9       |
| 25        | BCF, IR | ¾             | 10 | <b>728 914 057</b> | 0.022 | 51        | 28         | 36        | 2,3       |
| 32        | BCF, IR | 1             | 10 | <b>728 914 058</b> | 0.039 | 54        | 28         | 46        | 2,9       |
| 40        | BCF, IR | 1 ¼           | 10 | <b>728 914 059</b> | 0.057 | 56        | 28         | 55        | 3,7       |
| 50        | BCF, IR | 1 ½           | 10 | <b>728 914 060</b> | 0.085 | 60        | 28         | 64        | 4,6       |
| 63        | BCF, IR | 2             | 10 | <b>728 914 061</b> | 0.140 | 62        | 28         | 80        | 5,8       |

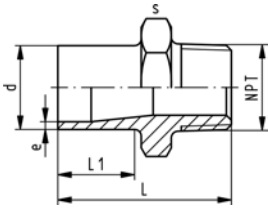
## PROGEF Natural, Adaptor Nipple, metric - R



### Model:

- Material: PP-R unpigmented
- With butt fusion spigot and BSP tapered male thread
- Connection to plastic thread only
- Do not use thread sealing pastes that are harmful to PP

| d<br>[mm] | FM      | R<br>[inch] | PN | Code               | kg    | L<br>[mm] | L1<br>[mm] | s<br>[mm] | e<br>[mm] |
|-----------|---------|-------------|----|--------------------|-------|-----------|------------|-----------|-----------|
| 20        | BCF, IR | ½           | 10 | <b>728 918 106</b> | 0.013 | 51        | 28         | 32        | 1,9       |
| 25        | BCF, IR | ¾           | 10 | <b>728 918 107</b> | 0.017 | 52        | 28         | 36        | 2,3       |
| 32        | BCF, IR | 1           | 10 | <b>728 918 108</b> | 0.027 | 55        | 28         | 46        | 2,9       |
| 40        | BCF, IR | 1 ¼         | 10 | <b>728 918 109</b> | 0.041 | 58        | 28         | 55        | 3,7       |
| 50        | BCF, IR | 1 ½         | 10 | <b>728 918 110</b> | 0.060 | 60        | 28         | 65        | 4,6       |
| 63        | BCF, IR | 2           | 10 | <b>728 918 111</b> | 0.098 | 67        | 28         | 80        | 5,8       |



## PROGEF Natural, Adaptor Nipple, metric - NPT

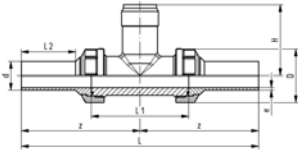
### Model:

- Material: PP-R unpigmented
- With butt fusion spigot **SDR11** and NPT tapered male thread
- Connection to plastic thread only
- Do not use thread sealing pastes that are harmful to PP

| d<br>[mm] | NPT<br>[inch] | PN | FM      | Code               | kg    | L<br>[mm] | L1<br>[mm] | s<br>[mm] | e<br>[mm] |
|-----------|---------------|----|---------|--------------------|-------|-----------|------------|-----------|-----------|
| 20        | ½             | 10 | BCF, IR | <b>728 914 106</b> | 0.013 | 51        | 28         | 32        | 1,9       |
| 25        | ¾             | 10 | BCF, IR | <b>728 914 107</b> | 0.017 | 52        | 28         | 36        | 2,3       |
| 32        | 1             | 10 | BCF, IR | <b>728 914 108</b> | 0.027 | 55        | 28         | 46        | 2,9       |
| 40        | 1 ¼           | 10 | BCF, IR | <b>728 914 109</b> | 0.041 | 58        | 28         | 55        | 3,7       |
| 50        | 1 ½           | 10 | BCF, IR | <b>728 914 110</b> | 0.060 | 60        | 28         | 65        | 4,6       |
| 63        | 2             | 10 | BCF, IR | <b>728 914 111</b> | 0.098 | 67        | 28         | 80        | 5,8       |

28 31 81

## Installation Fitting Type 318, PP-R for Butt Fusion Systems metric



**Model:**

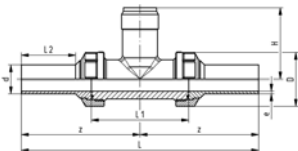
- For Signet Paddlewheel Sensors Type -X0 (104 mm)
- Body and union nut PP-H
- Union end with butt fusion spigot PP-R

| d<br>[mm] | DN<br>[mm] | PN | FM      | EPDM<br>Code       | FPM<br>Code        | kg    |
|-----------|------------|----|---------|--------------------|--------------------|-------|
| 20        | 15         | 10 | BCF, IR | <b>728 318 106</b> | <b>728 318 136</b> | 0.250 |
| 25        | 20         | 10 | BCF, IR | <b>728 318 107</b> | <b>728 318 137</b> | 0.190 |
| 32        | 25         | 10 | BCF, IR | <b>728 318 108</b> | <b>728 318 138</b> | 0.250 |
| 40        | 32         | 10 | BCF, IR | <b>728 318 109</b> | <b>728 318 139</b> | 0.356 |
| 50        | 40         | 10 | BCF, IR | <b>728 318 110</b> | <b>728 318 140</b> | 0.510 |
| 63        | 50         | 10 | BCF, IR | <b>728 318 111</b> | <b>728 318 141</b> | 0.800 |

| d<br>[mm] | D<br>[mm] | z<br>[mm] | L<br>[mm] | L1<br>[mm] | L2<br>[mm] | H<br>[mm] | e<br>[mm] | Sensor Type |
|-----------|-----------|-----------|-----------|------------|------------|-----------|-----------|-------------|
| 20        | 45        | 99        | 198       | 90         | 38         | 76        | 1.9       | X0          |
| 25        | 55        | 107       | 214       | 100        | 42         | 78        | 2.3       | X0          |
| 32        | 62        | 115       | 230       | 110        | 41         | 81        | 2.9       | X0          |
| 40        | 75        | 118       | 236       | 110        | 42         | 85        | 3.7       | X0          |
| 50        | 84        | 126       | 252       | 120        | 44         | 89        | 4.6       | X0          |
| 63        | 101       | 134       | 268       | 130        | 45         | 95        | 5.8       | X0          |

27 31 80

## Installation Fitting Type 318, PP-R for Butt Fusion Systems metric



**Model:**

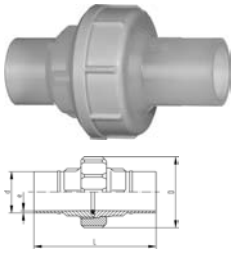
- For Signet Paddlewheel Sensors Type -X0 (104 mm)
- Body and union nut PVDF
- Union end with butt fusion spigot PP-R

| d<br>[mm] | DN<br>[mm] | PN | FM      | EPDM<br>Code       | FPM<br>Code        | kg    |
|-----------|------------|----|---------|--------------------|--------------------|-------|
| 20        | 15         | 10 | BCF, IR | <b>728 318 006</b> | <b>728 318 036</b> | 0.250 |
| 25        | 20         | 10 | BCF, IR | <b>728 318 007</b> | <b>728 318 037</b> | 0.355 |
| 32        | 25         | 10 | BCF, IR | <b>728 318 008</b> | <b>728 318 038</b> | 0.427 |
| 40        | 32         | 10 | BCF, IR | <b>728 318 009</b> | <b>728 318 039</b> | 0.700 |
| 50        | 40         | 10 | BCF, IR | <b>728 318 010</b> | <b>728 318 040</b> | 0.850 |
| 63        | 50         | 10 | BCF, IR | <b>728 318 011</b> | <b>728 318 041</b> | 1.182 |

| d<br>[mm] | D<br>[mm] | z<br>[mm] | L<br>[mm] | L1<br>[mm] | L2<br>[mm] | H<br>[mm] | e<br>[mm] | Sensor Type |
|-----------|-----------|-----------|-----------|------------|------------|-----------|-----------|-------------|
| 20        | 45        | 99        | 198       | 90         | 38         | 76        | 1.9       | X0          |
| 25        | 55        | 107       | 214       | 100        | 42         | 78        | 2.3       | X0          |
| 32        | 62        | 115       | 230       | 110        | 41         | 81        | 2.9       | X0          |
| 40        | 75        | 118       | 236       | 110        | 42         | 85        | 3.7       | X0          |
| 50        | 84        | 126       | 252       | 120        | 44         | 89        | 4.6       | X0          |
| 63        | 101       | 134       | 268       | 130        | 45         | 95        | 5.8       | X0          |

# Unions and Sanitary Adaptors

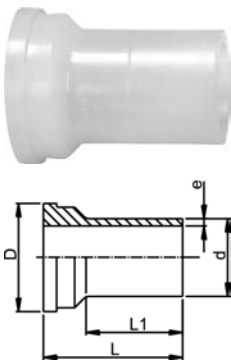
## Sanitary Union, SDR11



### Model:

- Material: PP-R unpigmented
- Bead and Crevice Free weldable with the new BCF® Plus fusion machine
- Infrared-(IR Plus®) compatible. Please choose fusion parameters: PP-n (PP-R)
- Conventional butt-welding according to DVS 2207 part 11
- FDA compliant

| d<br>[mm] | FM      | EPDM<br>Code       | FPM<br>Code        | kg    | D<br>[mm] | L<br>[mm] | L1<br>[mm] | L2<br>[mm] | e<br>[mm] |
|-----------|---------|--------------------|--------------------|-------|-----------|-----------|------------|------------|-----------|
| 20        | BCF, IR | <b>728 518 526</b> | <b>728 528 526</b> | 0.046 | 48        | 107       | 53         | 25         | 1,9       |
| 25        | BCF, IR | <b>728 518 527</b> | <b>728 528 527</b> | 0.074 | 58        | 113       | 56         | 25         | 2,3       |
| 32        | BCF, IR | <b>728 518 528</b> | <b>728 528 528</b> | 0.102 | 65        | 119       | 59         | 25         | 2,9       |
| 40        | BCF, IR | <b>728 518 529</b> | <b>728 528 529</b> | 0.169 | 79        | 126       | 63         | 25         | 3,7       |
| 50        | BCF, IR | <b>728 518 530</b> | <b>728 528 530</b> | 0.023 | 91        | 131       | 65         | 25         | 4,6       |
| 63        | BCF, IR | <b>728 518 531</b> | <b>728 528 531</b> | 0.382 | 111       | 137       | 68         | 25         | 5,8       |

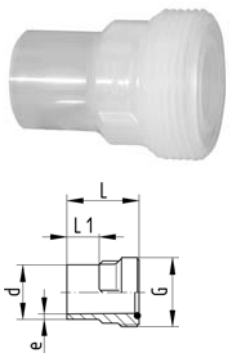


## PROGEF® Natural Union Ends IR, PP-N

### Model:

- Material: PP-R unpigmented
- Bead and Crevice Free weldable with the new BCF® Plus fusion machine
- Infrared-(IR Plus®) compatible. Please choose fusion parameters: PP-n (PP-R)
- Conventional butt-welding according to DVS 2207 part 11

| d<br>[mm] | PN | FM      | Code               | kg    | D<br>[mm] | L<br>[mm] | L1<br>[mm] | e<br>[mm] |
|-----------|----|---------|--------------------|-------|-----------|-----------|------------|-----------|
| 20        | 10 | BCF, IR | <b>728 608 506</b> | 0.009 | 30        | 53        | 35         | 1,9       |
| 25        | 10 | BCF, IR | <b>728 608 507</b> | 0.013 | 39        | 56        | 36         | 2,3       |
| 32        | 10 | BCF, IR | <b>728 608 508</b> | 0.016 | 45        | 59        | 38         | 2,9       |
| 40        | 10 | BCF, IR | <b>728 608 509</b> | 0.035 | 57        | 63        | 39         | 3,7       |
| 50        | 10 | BCF, IR | <b>728 608 510</b> | 0.054 | 63        | 65        | 41         | 4,6       |
| 63        | 10 | BCF, IR | <b>728 608 511</b> | 0.092 | 78        | 69        | 43         | 5,8       |



## PROGEF® Natural Union Bushes IR, PP-N SDR11

### Model:

- Material: PP-R unpigmented
- Bead and Crevice Free weldable with the new BCF® Plus fusion machine
- Infrared-(IR Plus®) compatible. Please choose fusion parameters: PP-n (PP-R)
- Conventional butt-welding according to DVS 2207 part 11

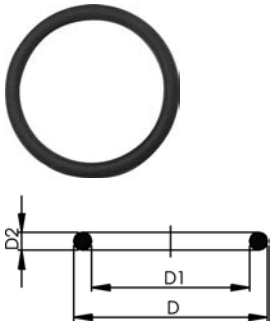
| d<br>[mm] | PN | FM      | Code               | kg    | G<br>[inch] | L<br>[mm] | L1<br>[mm] | e<br>[mm] |
|-----------|----|---------|--------------------|-------|-------------|-----------|------------|-----------|
| 20        | 10 | BCF, IR | <b>728 648 526</b> | 0.012 | 1           | 54        | 26         | 1,9       |
| 25        | 10 | BCF, IR | <b>728 648 527</b> | 0.020 | 1 1/4       | 57        | 26         | 2,3       |
| 32        | 10 | BCF, IR | <b>728 648 528</b> | 0.029 | 1 1/2       | 60        | 25         | 2,9       |
| 40        | 10 | BCF, IR | <b>728 648 529</b> | 0.047 | 2           | 63        | 25         | 3,7       |
| 50        | 10 | BCF, IR | <b>728 648 530</b> | 0.064 | 2 1/4       | 66        | 25         | 4,6       |
| 63        | 10 | BCF, IR | <b>728 648 531</b> | 0.104 | 2 3/4       | 69        | 25         | 5,8       |

EPDM 48 41 00  
FPM 49 41 00

## O-Ring Gaskets

### Model:

- Hardness approx. 65° Shore
- Suitable for unions 28 51 52, 28 51 53, 28 52 52, 28 52



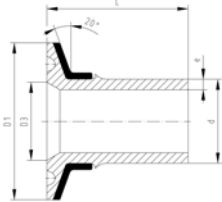
| d<br>[mm] | DN<br>[mm] | EPDM<br>Code | FPM<br>Code | kg    | D<br>[mm] | D1<br>[mm] | D2<br>[mm] |
|-----------|------------|--------------|-------------|-------|-----------|------------|------------|
| 20        | 15         | 748 410 140  | 749 410 140 | 0.003 | 20        | 15         | 3          |
| 20        | 15         | 748 410 006  | 749 410 006 | 0.002 | 27        |            |            |
| 32        | 25         | 748 410 025  | 749 410 025 | 0.002 | 32        | 25         | 4          |
| 40        | 32         | 748 410 152  | 749 410 152 | 0.006 | 42        | 31         | 5          |
| 40        | 32         | 748 410 009  | 749 410 009 | 0.006 | 51        |            |            |
| 63        | 50         | 748 410 171  | 749 410 171 | 0.010 | 61        | 50         | 5          |



## Sanitary Adaptor Connection to ISO 1127

### Model:

- Material: PP-R unpigmented
- Conventional butt-welding according to DVS 2207 part 11
- Infrared-(IR Plus®) compatible. Please choose fusion parameters: PP-n (PP-R)
- Bead and Crevice Free weldable with the new BCF® Plus fusion machine
- Stainless steel reinforcement ring



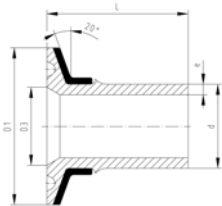
| d<br>[mm] | FM      | DN<br>[mm] | PN | Code        | kg    | D1<br>[mm] | D3<br>[mm] | L<br>[mm] | e<br>[mm] |
|-----------|---------|------------|----|-------------|-------|------------|------------|-----------|-----------|
| 20        | BCF, IR | 15         | 10 | 728 598 006 | 0.031 | 50         | 18         | 49.0      | 1,9       |
| 25        | BCF, IR | 20         | 10 | 728 598 008 | 0.032 | 50         | 23         | 49.5      | 2,3       |
| 25        | BCF, IR | 25         | 10 | 728 598 009 | 0.031 | 50         | 29         | 49.5      | 2,3       |
| 32        | BCF, IR | 25         | 10 | 728 598 010 | 0.033 | 50         | 29         | 53.0      | 2,9       |
| 40        | BCF, IR | 32         | 10 | 728 598 014 | 0.054 | 64         | 38         | 54.0      | 3,7       |
| 50        | BCF, IR | 40         | 10 | 728 598 016 | 0.062 | 64         | 44         | 61.0      | 4,6       |
| 63        | BCF, IR | 50         | 10 | 728 598 018 | 0.093 | 77         | 56         | 67.0      | 5,8       |



## Sanitary Adaptor Connection to DIN 32676

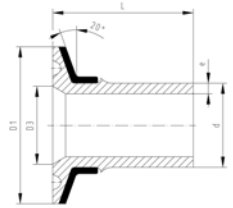
### Model:

- Material: PP-R unpigmented
- Conventional butt-welding according to DVS 2207 part 11
- Infrared-(IR Plus®) compatible. Please choose fusion parameters: PP-n (PP-R)
- Bead and Crevice Free weldable with the new BCF® Plus fusion machine
- Stainless steel reinforcement ring



| d<br>[mm] | FM      | DN<br>[mm] | PN | Code        | kg    | D1<br>[mm] | D3<br>[mm] | L<br>[mm] | e<br>[mm] |
|-----------|---------|------------|----|-------------|-------|------------|------------|-----------|-----------|
| 20        | BCF, IR | 15         | 10 | 728 598 056 | 0.014 | 34         | 16         | 49.0      | 1,9       |
| 20        | BCF, IR | 20         | 10 | 728 598 057 | 0.014 | 34         | 20         | 49.0      | 1,9       |
| 25        | BCF, IR | 25         | 10 | 728 598 059 | 0.031 | 50         | 26         | 49.5      | 2,3       |
| 32        | BCF, IR | 32         | 10 | 728 598 062 | 0.031 | 50         | 32         | 53.0      | 2,9       |
| 40        | BCF, IR | 40         | 10 | 728 598 065 | 0.032 | 50         | 38         | 54.0      | 3,7       |
| 50        | BCF, IR | 50         | 10 | 728 598 067 | 0.061 | 64         | 50         | 61.0      | 4,6       |



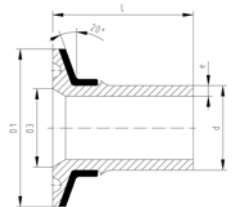


## Sanitary Adaptor Connection to DIN 3017

### Model:

- Material: PP-R unpigmented
- Conventional butt-welding according to DVS 2207 part 11
- Infrared-(IR Plus®) compatible. Please choose fusion parameters: PP-n (PP-R)
- Bead and Crevice Free weldable with the new BCF® Plus fusion machine
- Stainless steel reinforcement ring

| d<br>[mm] | FM      | DN<br>[mm] | PN | Code               | kg    | D1<br>[mm] | D3<br>[mm] | L<br>[mm] | e<br>[mm] |
|-----------|---------|------------|----|--------------------|-------|------------|------------|-----------|-----------|
| 25        | BCF, IR | 25         | 10 | <b>728 598 259</b> | 0.031 | 50         | 22         | 49.5      | 2,3       |
| 32        | BCF, IR | 32         | 10 | <b>728 598 262</b> | 0.031 | 50         | 32         | 53.0      | 2,9       |
| 40        | BCF, IR | 40         | 10 | <b>728 598 265</b> | 0.033 | 50         | 35         | 54.0      | 3,7       |
| 50        | BCF, IR | 50         | 10 | <b>728 598 267</b> | 0.061 | 64         | 49         | 61.0      | 4,6       |
| 63        | BCF, IR | 65         | 10 | <b>728 598 269</b> | 0.093 | 78         | 60         | 67.0      | 5,8       |

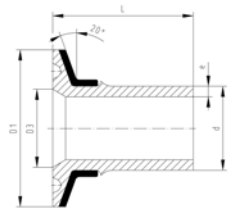


## Sanitary Adaptor Connection to ISO 2852

### Model:

- Material: PP-R unpigmented
- Conventional butt-welding according to DVS 2207 part 11
- Infrared-(IR Plus®) compatible. Please choose fusion parameters: PP-n (PP-R)
- Bead and Crevice Free weldable with the new BCF® Plus fusion machine
- Stainless steel reinforcement ring

| d<br>[mm] | FM      | DN<br>[mm] | PN | Code               | kg    | D1<br>[mm] | D3<br>[mm] | L<br>[mm] | e<br>[mm] |
|-----------|---------|------------|----|--------------------|-------|------------|------------|-----------|-----------|
| 25        | BCF, IR | 25         | 10 | <b>728 598 309</b> | 0.031 | 51         | 22         | 50        | 2,3       |
| 32        | BCF, IR | 32         | 10 | <b>728 598 312</b> | 0.031 | 51         | 32         | 53        | 2,9       |
| 40        | BCF, IR | 40         | 10 | <b>728 598 315</b> | 0.033 | 51         | 35         | 54        | 3,7       |
| 50        | BCF, IR | 50         | 10 | <b>728 598 317</b> | 0.061 | 64         | 49         | 61        | 4,6       |
| 63        | BCF, IR | 65         | 10 | <b>728 598 319</b> | 0.093 | 78         | 60         | 67        | 5,8       |



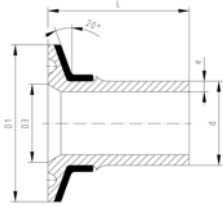
## Sanitary Adaptor Connection to ASME BPE

### Model:

- Material: PP-R unpigmented
- Conventional butt-welding according to DVS 2207 part 11
- Infrared-(IR Plus®) compatible. Please choose fusion parameters: PP-n (PP-R)
- Bead and Crevice Free weldable with the new BCF® Plus fusion machine
- Stainless steel reinforcement ring

\* Without stainless steel reinforcement ring

| d<br>[mm] | FM      | Inch  | PN | Code               | kg    | D1<br>[mm] | D3<br>[mm] | L<br>[mm] | e<br>[mm] |
|-----------|---------|-------|----|--------------------|-------|------------|------------|-----------|-----------|
| *20       | BCF, IR | 3/4   | 10 | <b>728 598 357</b> | 0.006 | 25         | 16         | 49        | 1,9       |
| 25        | BCF, IR | 1     | 10 | <b>728 598 359</b> | 0.031 | 51         | 22         | 50        | 2,3       |
| 40        | BCF, IR | 1 1/2 | 10 | <b>728 598 365</b> | 0.032 | 51         | 35         | 54        | 3,7       |
| 50        | BCF, IR | 2     | 10 | <b>728 598 367</b> | 0.061 | 64         | 48         | 61        | 4,6       |
| 63        | BCF, IR | 2 1/2 | 10 | <b>728 598 369</b> | 0.093 | 78         | 60         | 67        | 5,8       |

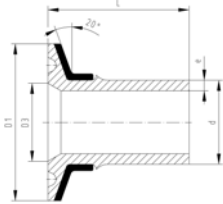


## Sanitary Adaptor Connection to JIS G3447

### Model:

- Material: PP-R unpigmented
- Conventional butt-welding according to DVS 2207 part 11
- Infrared-(IR Plus®) compatible. Please choose fusion parameters: PP-n (PP-R)
- Bead and Crevice Free weldable with the new BCF® Plus fusion machine
- Stainless steel reinforcement ring

| d<br>[mm] | FM      | DN<br>[mm] | PN | Code               | kg    | D1<br>[mm] | D3<br>[mm] | L<br>[mm] | e<br>[mm] |
|-----------|---------|------------|----|--------------------|-------|------------|------------|-----------|-----------|
| 20        | BCF, IR | 15         | 10 | <b>728 598 406</b> | 0.014 | 34         | 18         | 49.0      | 1,9       |
| 25        | BCF, IR | 20         | 10 | <b>728 598 408</b> | 0.032 | 50         | 23         | 49.5      | 2,3       |
| 32        | BCF, IR | 25         | 10 | <b>728 598 410</b> | 0.033 | 50         | 30         | 53.0      | 2,9       |
| 40        | BCF, IR | 32         | 10 | <b>728 598 414</b> | 0.033 | 50         | 35         | 54.0      | 3,7       |
| 50        | BCF, IR | 40         | 10 | <b>728 598 416</b> | 0.061 | 64         | 48         | 61.0      | 4,6       |
| 63        | BCF, IR | 50         | 10 | <b>728 598 418</b> | 0.093 | 78         | 60         | 67.0      | 5,8       |



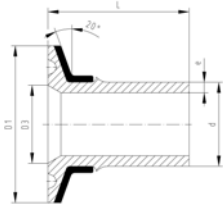
## Sanitary Adaptor Connection to 3A Standard

### Model:

- Material: PP-R unpigmented
- Conventional butt-welding according to DVS 2207 part 11
- Infrared-(IR Plus®) compatible. Please choose fusion parameters: PP-n (PP-R)
- Bead and Crevice Free weldable with the new BCF® Plus fusion machine
- Stainless steel reinforcement ring

\* Without stainless steel reinforcement ring

| d<br>[mm] | FM      | Inch  | PN | Code               | kg    | D1<br>[mm] | D3<br>[mm] | L<br>[mm] | e<br>[mm] |
|-----------|---------|-------|----|--------------------|-------|------------|------------|-----------|-----------|
| *20       | BCF, IR | 3/4   | 10 | <b>728 598 207</b> | 0.006 | 25         | 16         | 49.0      | 1,9       |
| 25        | BCF, IR | 1     | 10 | <b>728 598 209</b> | 0.032 | 50         | 22         | 49.5      | 2,3       |
| 32        | BCF, IR | 1 1/2 | 10 | <b>728 598 213</b> | 0.032 | 50         | 35         | 53.0      | 2,9       |
| 40        | BCF, IR | 1 1/2 | 10 | <b>728 598 215</b> | 0.033 | 50         | 35         | 54.0      | 3,7       |
| 50        | BCF, IR | 2     | 10 | <b>728 598 217</b> | 0.061 | 64         | 48         | 61.0      | 4,6       |
| 63        | BCF, IR | 2 1/2 | 10 | <b>728 598 219</b> | 0.093 | 78         | 60         | 67.0      | 5,8       |



## Sanitary Adaptor Connection to Membrane Manometer

### Model:

- Material: PP-R unpigmented
- Conventional butt-welding according to DVS 2207 part 11
- Infrared-(IR Plus®) compatible. Please choose fusion parameters: PP-n (PP-R)
- Bead and Crevice Free weldable with the new BCF® Plus fusion machine
- Stainless steel reinforcement ring

| d<br>[mm] | FM      | DN<br>[mm] | PN | Code               | kg    | e<br>[mm] | D1<br>[mm] | D3<br>[mm] | L<br>[mm] |
|-----------|---------|------------|----|--------------------|-------|-----------|------------|------------|-----------|
| 20        | BCF, IR | 15         | 10 | <b>728 598 516</b> | 0.029 | 1,9       | 50         | 34         | 49        |
| 25        | BCF, IR | 20         | 10 | <b>728 598 518</b> | 0.031 | 2,3       | 50         | 34         | 50        |
| 32        | BCF, IR | 25         | 10 | <b>728 598 520</b> | 0.032 | 2,9       | 50         | 34         | 53        |